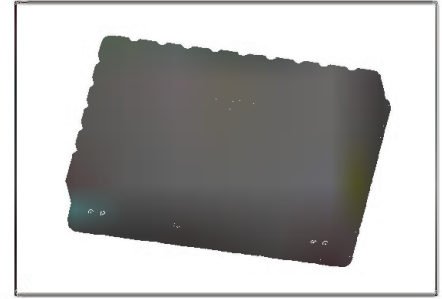


Typical application 典型应用

- Backup power supply for fan rotor system
风机变桨系统后备电源
- Energy feedback system
能量回馈系统
- Ferry, sightseeing car, golf cart, AGV and RGV
渡轮、观光车、高尔夫球车、AGV及RGV
- Energy saving elevator 节能电梯
- Hybrid power driven engineering machinery and harbor machinery
混合动力工程机械及港口机械
- Emergency UPS 应急后备电源
- Wind power, solar and other renewable energy storage
风电、光伏等可再生能源储能



Items 项目	Criteria 模组参数
Rated Capacitance 额定容量 (25°C)	50 F
Capacitance Tolerance 容量偏差	0%~20%
ESR _{DC} 直流内阻 (25°C)	≤170 mΩ
Rated Voltage 额定电压	225 V
Maximum Normal Operating Voltage 最高正常工作电压	240 V
Rated Current 额定电流	13 A
30 Seconds Discharge Current 30秒放电电流	85 A
3 Seconds Maximum Peak Current 3秒最大峰值电流	145 A
Operating Temperature Range 工作温度范围	-25°C ~+65°C
Storage Temperature Range 存储温度范围	-25°C ~+65°C
Weight 重量	8 kg
Maximum Stored Energy 最大储存能量	390 Wh
Specific Energy 能量密度	48.7 Wh/Kg
Specific Power 功率密度	9300 W/Kg
Cycle Life 循环寿命	120V-225V: 500000 times 120V-240V: 30000 times

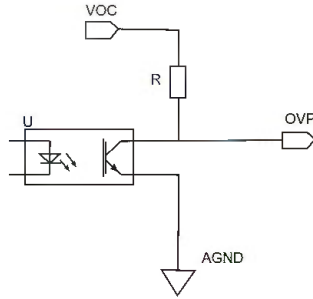
Life Time 寿命	Criteria 参数
High Temperature Loaded 高温负荷	1,500 hours
Capacity Changes 容量变化	≤20%
Change In Internal Resistance 内阻变化	≤100%
Room Temperature Environment 室温环境 Rated Voltage 额定电压 (25°C)	10 years
Capacity Changes 容量变化	≤20%
Change In Internal Resistance 内阻变化	≤100%
Cycle Life 循环寿命	500,000
Capacity Changes 容量变化	≤20%
Change In Internal Resistance 内阻变化	≤100%
Safety 安全	
Dielectric Strength 绝缘耐压	2,500 VDC

保护功能介绍 Introduction to protection functions:

1. 过压保护 Overvoltage protection

项目 Items	参数 Criteria	备注 Remark
过压报警电压 Overvoltage alarm voltage	4.15V±0.05V	过压报警触发后，自保护开关器件切换至断开状态，模组电压无输出 After the overvoltage alarm is triggered, the self-protection switch device switches to the disconnected state, and the module voltage has no output
过压报警方式 Overvoltage alarm method	高电平正常，低电平报警 High level normal, low level alarm	

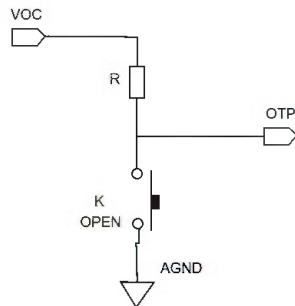
过压报警原理图 Schematic diagram of overvoltage alarm:



2. 过温保护 Over Temperature Protection

项目 Items	参数 Criteria	备注 Remark
欠压报警电压 Under voltage alarm voltage	2.0V±0.05V	欠压报警触发后，自保护开关器件切换至断开状态，模组电压无输出 After the undervoltage alarm is triggered, the self-protection switch device switches to the disconnected state, and the module voltage has no output
欠压报警方式 Under voltage alarm mode	高电平正常，低电平报警 High level normal, low level alarm	

过温报警原理图 Schematic diagram of overtemperature alarm:



3. 欠压保护 under voltage protection

项目 Items	参数 Criteria	备注 Remark
欠压报警电压 Under voltage alarm voltage	2.0V±0.05V	欠压报警触发后，自保护开关器件切换至断开状态，模组电压无输出 After the undervoltage alarm is triggered, the self-protection switch device switches to the disconnected state, and the module voltage has no output
欠压报警方式 Under voltage alarm mode	高电平正常，低电平报警 High level normal, low level alarm	

欠压报警原理图 Undervoltage alarm schematic diagram:

